

POWERLINE



The electrified tracks enable the user to configure the wall system without restrictions. Shelves can be moved to any desired position to ensure perfectly even and comfortable lighting. With the plug&play components it is easy to integrate lighting into shelving.

Equipped with a wide range of accessories and various types of shelves and brackets, Powerline is an elegant and practical solution for retail stores and home walk-in closets.



FULL VERSATILITY

Brackets for single or continuous shelves, made for wood or glass, straight, inclined or with support for hanging bar.

MODULARITY

A modular and compatible structure that can be integrated anywhere.

PLUG & PLAY

Brackets equipped with connectors for quick installation.

PRACTICALITY

The illuminated shelves can be moved freely without the need for electrical intervention.

TAILOR-MADE

Dimensions and finishes can be customized.

VISUAL HARMONY

Designed for commercial and residential environments.

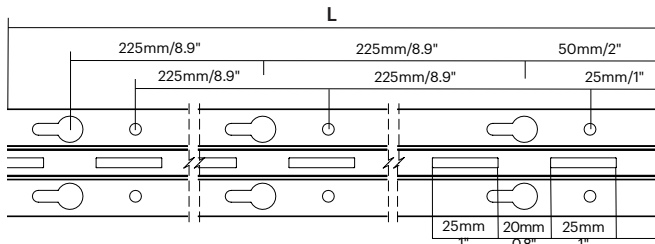
Single Track

Powerline Track

Single Track (10mm Panels)

Item Code	L (mm)	L (in)	Finish
2301001	2500mm	8ft.	Black
2301002	3000mm	10ft.	Black
2302001	2500mm	8ft.	Gray
2302002	3000mm	10ft.	Gray

Single electrified track for back panels up to 10 mm thick, compatible with all types of brackets. Available in a black or gray finish.



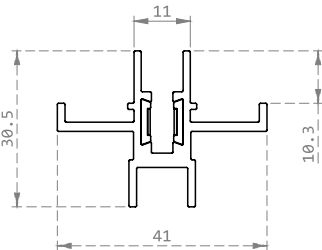
Powerline Track

Single Track (18mm Panels)

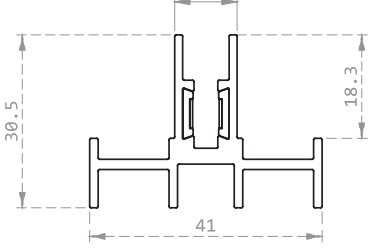
Item Code	L (mm)	L (in)	Finish
2301002-01	3000mm	10ft.	Black
2302002-01	3000mm	10ft.	Gray

Single electrified track for back panels up to 18 mm thick, compatible with all types of brackets. Available in a black or gray finish.

10mm Panel Track



18mm Panel Track

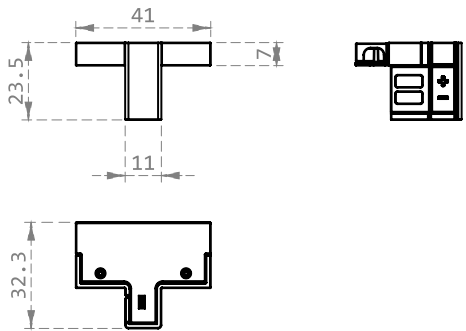
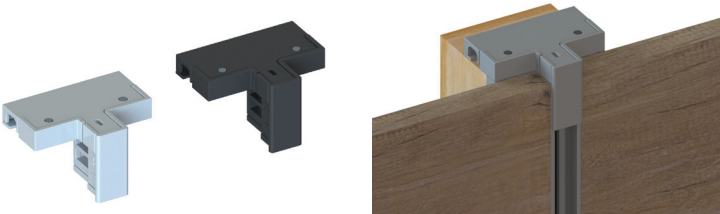


Power Connector Cap (Connects driver to track)

Single Track

Item Code	Cable Length (mm)	Cable Length (ft.)	Details / Finish
1500041	1000mm	3ft.	Top Mount / Black
1500028	1000mm	3ft.	Bottom Mount / Black
1500042	1000mm	3ft.	Top Mount / Gray
1500035	1000mm	3ft.	Bottom Mount / Gray

The connector cap is placed at the top or bottom of the electrified track. It is equipped with a 3ft. cable to connect to the MEC Driver (13ft. cable connection on request). Available in a black or gray finish.



End Cap (Single Track)

Item Code	Details / Finish
1500045	Black
1500046	Gray

The end cap is placed at the top or bottom of the electrified track. It is used for the section where no power is needed. Available in a black or gray finish.

Double Track

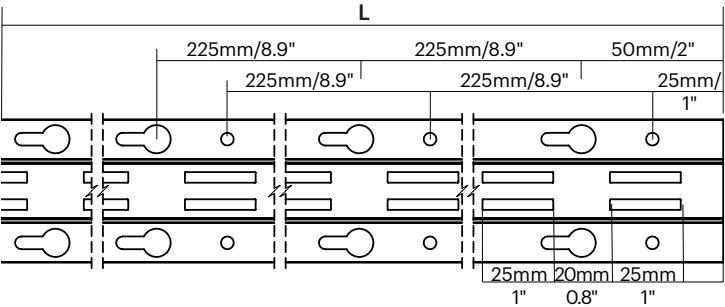
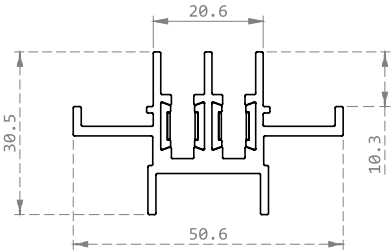
Powerline Track

Double Track (10mm Panels)

Item Code	L (mm)	L (in)	Finish
2301003	2500mm	8ft.	Black
2301004	3000mm	10ft.	Black
2302003	2500mm	8ft.	Gray
2302004	3000mm	10ft.	Gray

Tracks are also available for 18mm thick panels. Contact us for more information.

Electrified double rail for back panels up to 10 mm thick, specifically for installations where several shelves need to be placed side by side, without having to use the "line" brackets. Available in a black or gray finish.

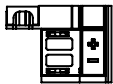
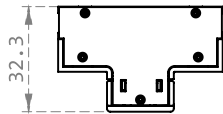
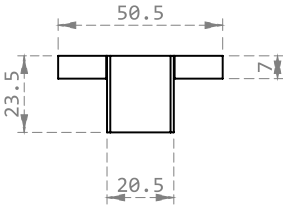
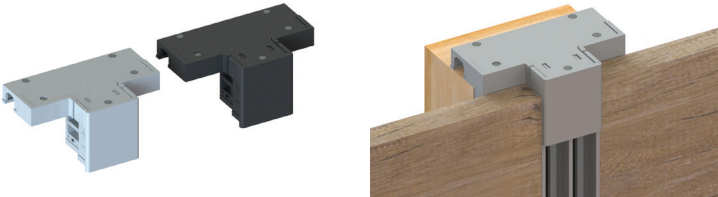


Power Connector Cap (Connects driver to track)

Double Track

Item Code	Cable Length (mm)	Cable Length (in)	Details / Finish
1500026	1000mm	3ft.	Top Mount / Black
1500029	1000mm	3ft.	Bottom Mount / Black
1500027	1000mm	3ft.	Top Mount / Gray
1500036	1000mm	3ft.	Bottom Mount / Gray

The connector cap is placed at the top or bottom of the electrified track. It is equipped with a cable to connect to the MEC Driver (13ft. cable connection on request). Available in a black or gray finish.



End Cap (Double Track)

Item Code	Details / Finish
1500047	Black
1500048	Gray

The end cap is placed at the top or bottom of the electrified track. It is used for the section where no power is needed. Available in a black or gray finish.

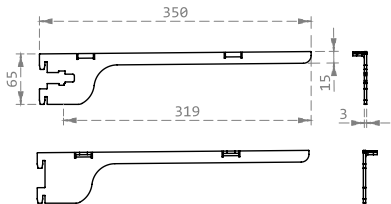
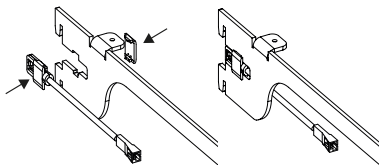
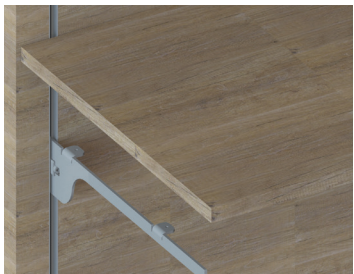
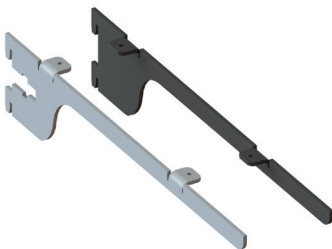
Brackets for Single Wooden Shelves

Brackets (pair for one shelf)

w. Power Connector Slot

Item Code	Details	Material	Finish
2301008	Kit (2pcs.)	Wood	Black
2302008	Kit (2pcs.)	Wood	Gray

Kit includes a left and right bracket. The left version has a slot to insert the power connector (sold separately). Use this bracket to guide the cable underneath the shelf. Available in black or gray finish.

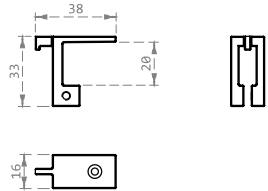
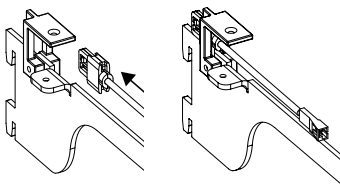
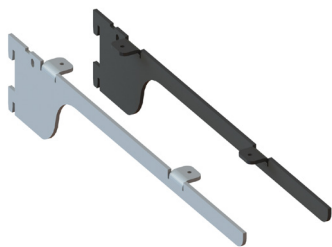


Brackets (pair for one shelf)

for Concealed Connection

Item Code	Details	Material	Finish
2301005	Kit (2pcs.)	Wood	Black
2302005	Kit (2pcs.)	Wood	Gray

Kit includes a left and right bracket. Use the power connector holder (sold separately) to electrify the shelf through a concealed connection. Available in black or gray finish.

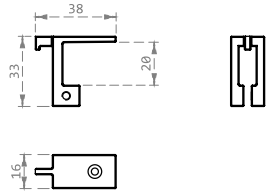
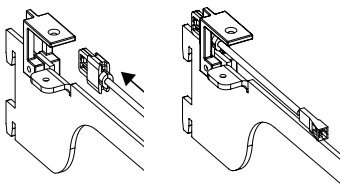
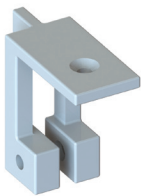


Holder for Power Connector

for Concealed Connection

Item Code	Details	Material	Finish
2301007	Kit (2pcs.)	Wood	Black
2302007	Kit (2pcs.)	Wood	Gray

Support holder is used to retract the power connector (sold separately) for a concealed light connection. Compatible with all common shelf sizes, above 18mm depth for wooden shelves and from 3mm to 12mm depth for glass shelves. If used with glass shelves, works also as shelf lock clip. Available in black or gray finish.

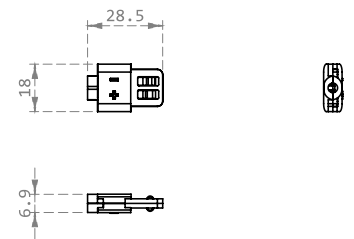
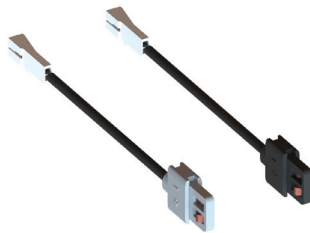


Bracket Power Connector

For light connection

Item Code	Details	Material	Finish
1500043	75mm	0.2ft.	Black
1500044	430mm	1ft.	Black
1500031	75mm	0.2ft.	Gray
1500030	430mm	1ft.	Gray

Power supply connector for L&S lamps, suitable for shelves in bracket or concealed bracket versions.

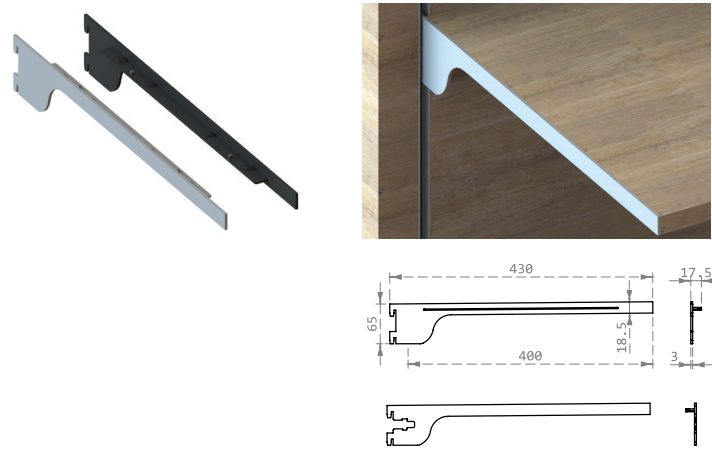


Brackets for Multiple Wooden Shelves

"Line" Series

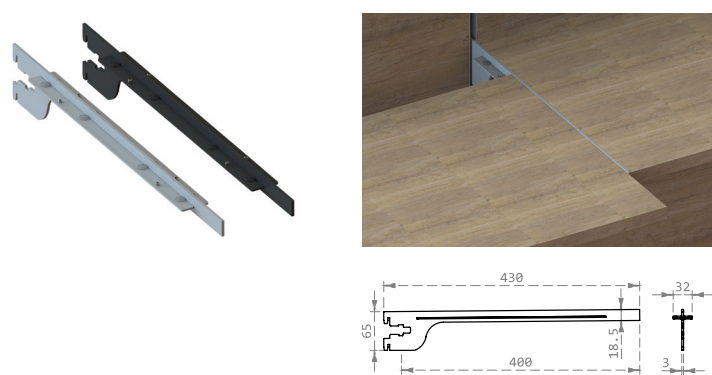
Brackets (Multiple Shelves)		Side Brackets	
Item Code	Details	Version	Finish
5231001	Kit (2pcs.)	Electrified	Black
5231011	Kit (2pcs.)	Without light	Black
5232001	Kit (2pcs.)	Electrified	Gray
5232011	Kit (2pcs.)	Without light	Gray

Pair of left and right brackets, designed to flank and align several shelves. In the electrified version, the left bracket has a slot for the power connector for L&S lights (sold separately).



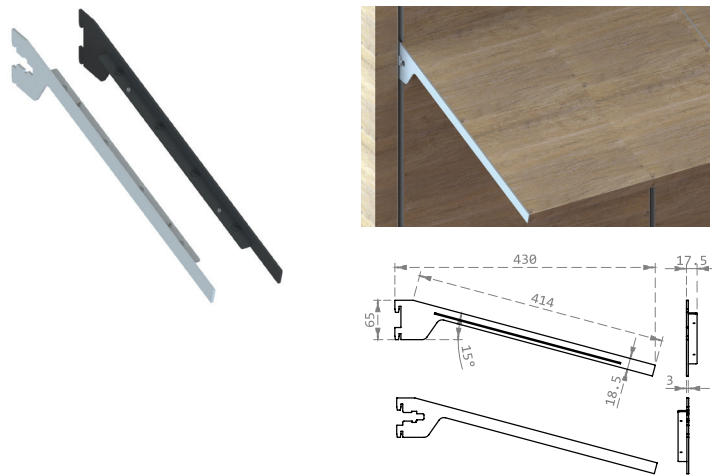
Brackets (Multiple Shelves)		Central Brackets	
Item Code	Details	Version	Finish
5231002	Single (1pc.)	Electrified	Black
5231012	Single (1pc.)	Without light	Black
5232002	Single (1pc.)	Electrified	Gray
5232012*	Single (1pc.)	Without light	Gray

Central bracket designed to allow several shelves to be placed side by side and aligned. The electrified version has a slot for the power connector.



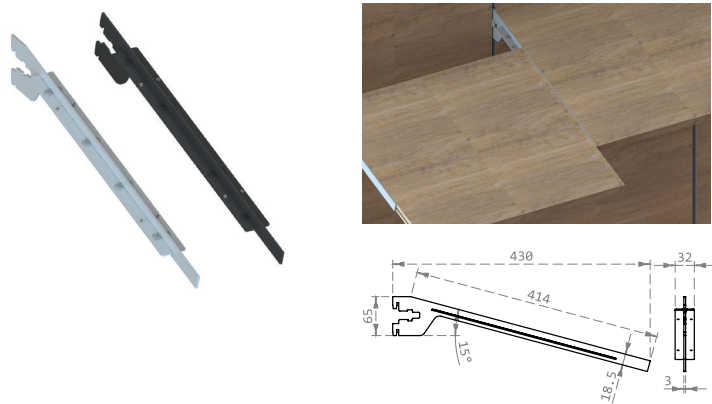
Brackets (Multiple Shelves)		Inclined / Side Brackets	
Item Code	Details	Version	Finish
5231003	Kit (2pcs.)	Electrified	Black
5231013	Kit (2pcs.)	Without light	Black
5232003	Kit (2pcs.)	Electrified	Gray
5232013	Kit (2pcs.)	Without light	Gray

Pair of left and right angled brackets, designed to allow several shelves to be placed side by side and aligned. In the electrified version, the left bracket has a slot for the power connector.



Brackets (Multiple Shelves)		Inclined / Central Brackets	
Item Code	Details	Version	Finish
5231004	Single (1pc.)	Electrified	Black
5231014	Single (1pc.)	Without light	Black
5232004	Single (1pc.)	Electrified	Gray
5232014*	Single (1pc.)	Without light	Gray

Central inclined bracket designed to be able to place and align several shelves side by side. The electrified version has a slot for the power connector.



*Extended lead times expected for this part. Please contact your sales representative for details.

Brackets for Glass Shelves

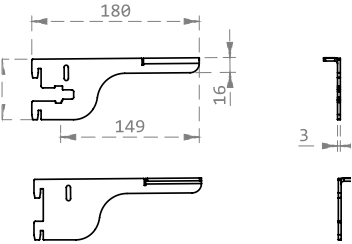
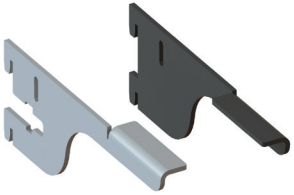
Brackets

For Glass Shelves

Item Code	Details	Material	Finish
2301006	Kit (4pcs.)*	Glass	Black
2302006	Kit (4pcs.)*	Glass	Gray

*Includes support holder to hold glass shelf in place.

Pair of left and right brackets with support holder (2 pc. kit). On the left-hand version, space is provided for quick and easy installation of the power connector for L&S lights (sold separately).

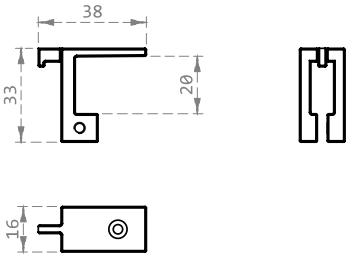
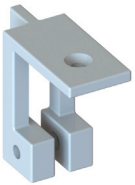


Support Holder

For Glass Shelves

Item Code	Details	Material	Finish
2301007	Kit (2pcs.)	Glass	Black
2302007	Kit (2pcs.)	Glass	Gray

Bracket support with concealed connector, suitable for glass shelves from 3 mm to 12 mm. The support holder is used with the bracket to hold the glass shelf in place.



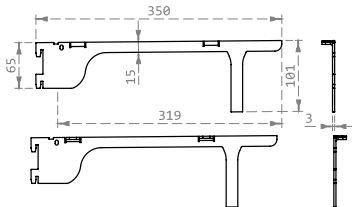
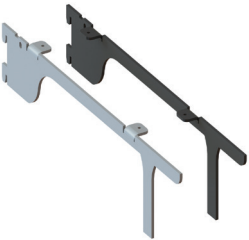
Brackets for MEC Rack


Brackets for MEC Rack

For Concealed Connector

Item Code	Details	Material	Finish
5230010	Kit (2pcs.)	Wood	Black
5230020	Kit (2pcs.)	Wood	Gray

Pair of left and right brackets specially designed to accommodate the MEC Rack hanger tube. On the left-hand version, space is provided for quick and easy installation of the power connector for L&S lights (sold separately).





Powerline: easy to install, quick to move, perfect to illuminate.

ELECTRIFIED VERSATILE
STRUCTURE, SUITABLE FOR
RESIDENTIAL AND RETAIL ENVIRONMENTS